



## vWALL

WALK IN WARDROBE AND SHELVING SYSTEM

- Applications:** Walk in wardrobes, wall panelling, living area wall units
- Benefits:** Simple, functional design, easy installation, cost effective components

**Frame and Shelving brackets:**

Standard:



BLK

On Request:



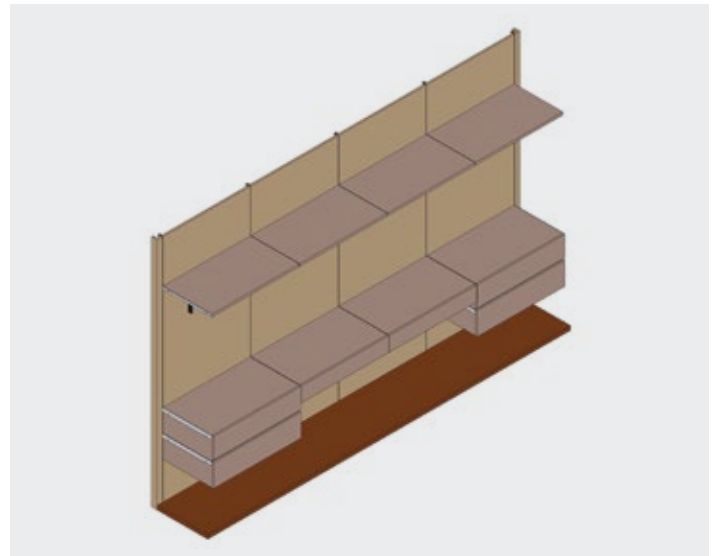
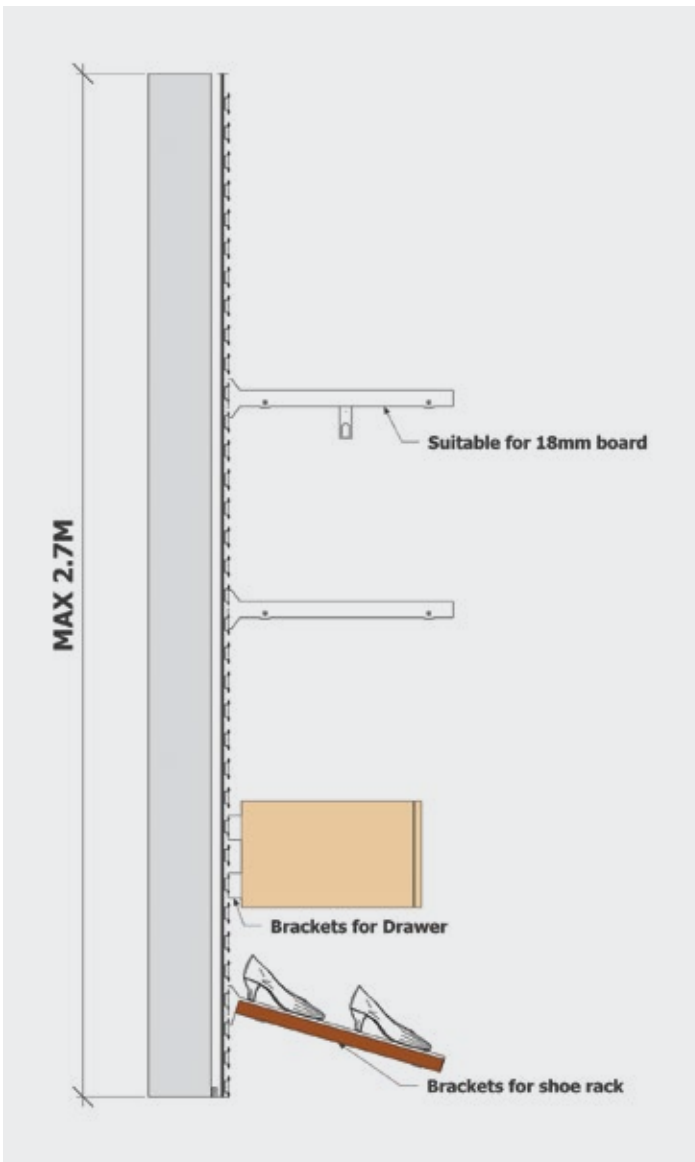
WHT



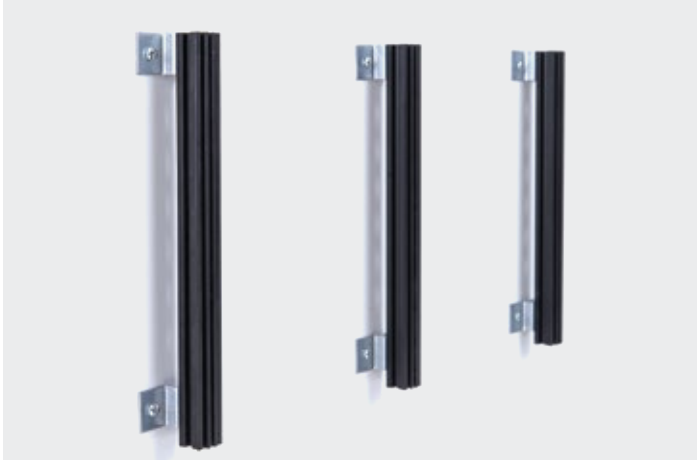
GRY



GRP



## INSTALLATION



1. Fix Vertical uprights



2. Clip on panels and fit shelving or cabinets

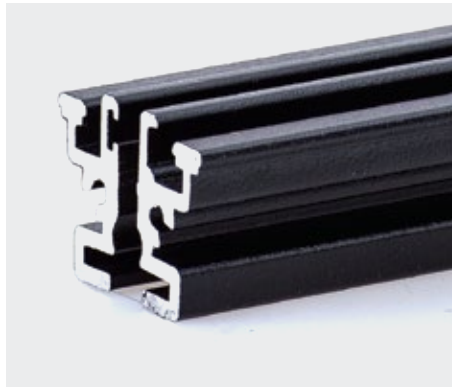


**Vertical Wall Panel Profile Kit**

VW\_UPRIGHT\_KIT\_blk

*Kit includes:*

- 1 x Vertical upright \_ black
- 6 x Upright fixing brackets
- 12 x Panel connector clips
- 1 x upright support plate



**Wardrobe Upright For  
Shelving - 2.7m \_ black**  
VW\_UPRIGHT\_blk



**Upright Fixing Bracket**  
VW001



**Upright Support Plate**  
VW007



**Panel Connector Clips**  
VW002



VW\_SHELF.55\_blk  
**Shelf bracket - 550mm** \_ black incl VW005  
VW\_SHELF.40\_blk  
**Shelf bracket - 400mm** \_ black incl VW005  
VW\_SHELF.30\_blk  
**Shelf bracket - 300mm** \_ black incl VW005



VW\_SHELF.55ang\_blk  
**Angled Shelf bracket - 550mm** \_ black incl VW005  
VW\_SHELF.30ang\_blk  
**Angled Shelf bracket - 300mm** \_ black incl VW005



VW005  
**Shelf bracket fixings - 4 pack**



VW008  
**Cabinet hangers - pair - black**

